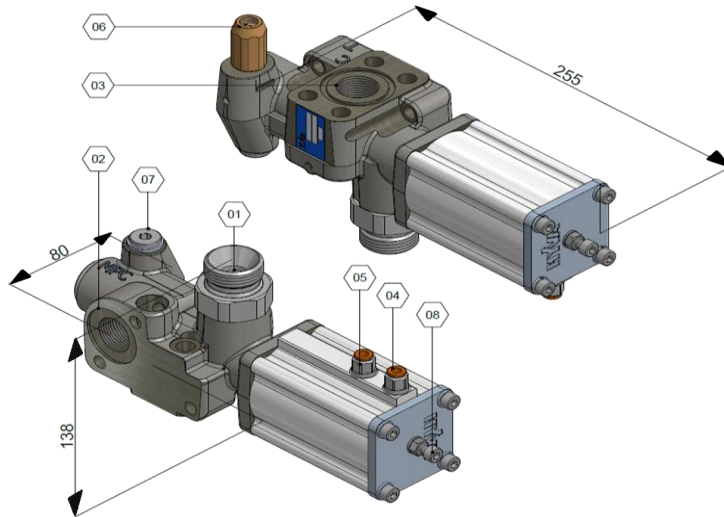


For direct mounting on

- TNK: Hyva tank mounting plate
- SAE: SAE inlet of Hyva cylinder



3D model is available on request

- 1 P Pump connection
- 2 T Tank connection
- 3 C Cylinder connection SAE
- 4 Pneumatic connection (Tip) 6 mm
- 5 Pneumatic connection (Lower) 6 mm
- 6 Pressure relief cartridge
- 7 MPC Measure Pressure Cylinder (Pressure gauge point)
- 8 Adjustment screw (int.hex. 5) (To adjust the lowering speed)

**SAFETY:**

HT valve fitted on cylinder (SAE) port provides hose burst safety function

### Types

Hydraulic connections	Pressure (bar)	Part Number	Description
	Max.		
P: G3/4" T: G3/4" C: G3/4" / SAE MPC: G1/4"	135	14767213	TIP VALVE HT-TNK/SAE-1150-135-P3/4"
	150	14767215	TIP VALVE HT-TNK/SAE-1150-150-P3/4"
	170	14767217	TIP VALVE HT-TNK/SAE-1150-170-P3/4"
	190	14767219	TIP VALVE HT-TNK/SAE-1150-190-P3/4"
	220	14767222	TIP VALVE HT-TNK/SAE-1150-220-P3/4"
	250	14767225	TIP VALVE HT-TNK/SAE-1150-250-P3/4"
P:G1" T: G3/4" C: G3/4" / SAE MPC: G1/4"	135	14767263	TIP VALVE HT-TNK/SAE-1150-135-P1"
	150	14767265	TIP VALVE HT-TNK/SAE-1150-150-P1"
	170	14767267	TIP VALVE HT-TNK/SAE-1150-170-P1"
	190	14767269	TIP VALVE HT-TNK/SAE-1150-190-P1"
	220	14767272	TIP VALVE HT-TNK/SAE-1150-220-P1"
	250	14767275	TIP VALVE HT-TNK/SAE-1150-250-P1"

Mounting kits	Kit number
Cylinder (SAE)**	14735162
Tank (TNK)**	14735168

\*\* included with valve

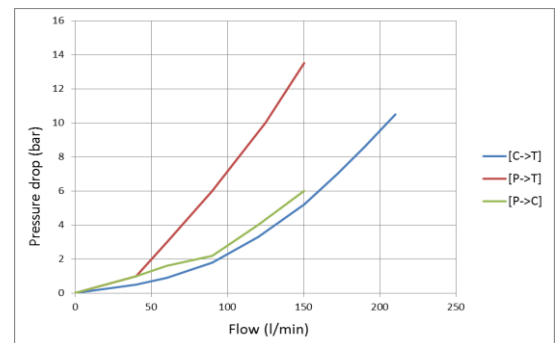
For cylinder mounting on FC cylinder with K dimension 343, following adaptor for tankport (T) is advised to prevent collision with cradle:

Description	Part number
ADAPTOR HP 90 3/4"BSPOTx3/4"BSPOT	01317997

### Specifications

Type	3/3 pneumatic operated tipping valve with proportional lowering		
Max. pump flow	150	L/min	
Max. pressure	315	bar	
Pneumatic pilot pressure	6 - 12	bar	
Max. pressure on T-connection	10	bar	
Min. filtration	25	µm	
Viscosity range	min / max	12 / 100	mm <sup>2</sup> /s (cSt)
Max. starting viscosity		1500	mm <sup>2</sup> /s (cSt)
Temperature range	min / max	-40 / 80	°C
Mass	3,7	kg	

### Δp - Q characteristic



### Technical notes

- Mount the valve according the mounting instructions • Use the correct washers and adapters in the ports to prevent deformation of the housing. Do not use adapters with tapered threads • To further prevent deformation of the valve housing, the mounting plate surface or block must be completely flat and smooth • Do not weld to the valve • Ideal air pressure for valve is 8 bar • Make sure inlet air is dry and clean • Painted black (RAL9005)

### Related documentation

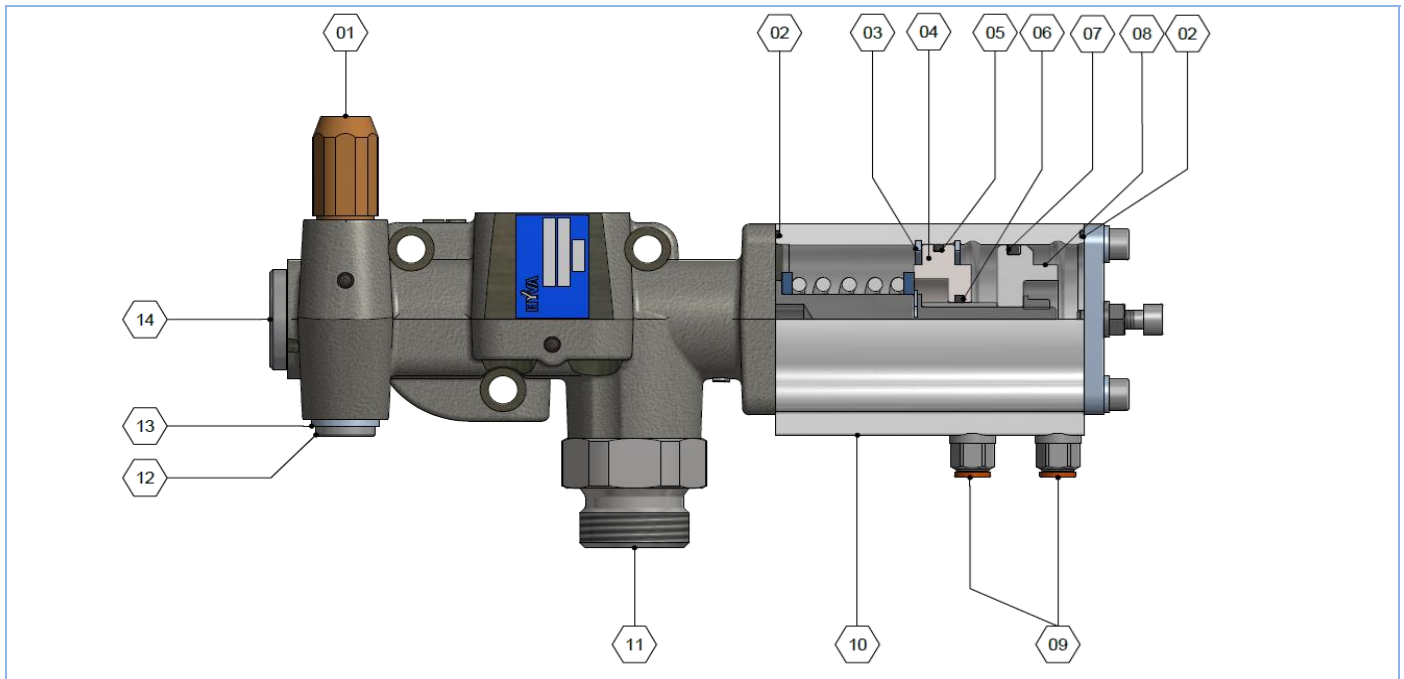
Mounting instructions: VAL-0020

Oil specifications: OIL-0011

# HYVA TIPPING VALVE



HT-1150-TNK / SAE



## Spare Parts

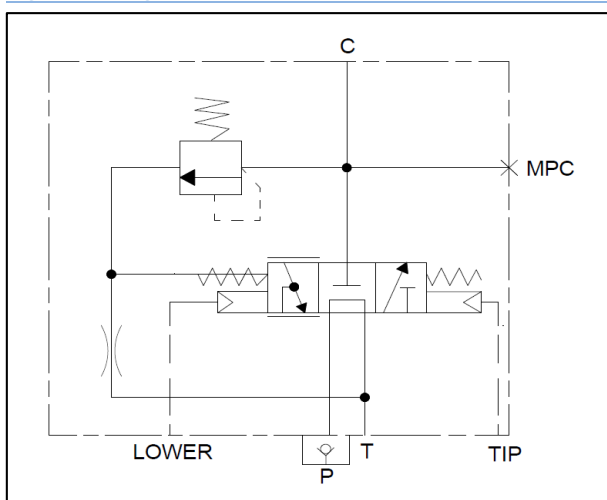
No.	Part no.	Description	Qty.
1	14772__	Pressure relief cartridge	1
	135	135 bar	
	150	150 bar	
	170	170 bar	
	190	190 bar	
	220	220 bar	
	250	250 bar	
2	n.a; see repair kit	O-ring	2
3	n.a; see repair kit	Circlip	2
4	n.a; see repair kit	Closing plate	1
5	n.a; see repair kit	O-ring	1
6	n.a; see repair kit	Quadring	1
7	n.a; see repair kit	Quadring	1

No.	Part no.	Description	Qty.
8	n.a.	Piston air cylinder	1
9	14810517	Air coupling 6 mm	2
10	n.a; see repair kit	Aluminium head	1
11	14739980	Non-return valve 3/4"	1
	14739975A	Non-return valve 1"	1
12	n.a.	Plug 1/4"	1
13	01206813	Bonded seal 1/4"	1
14	n.a.	Plug M27	1

## Repair kits

	14844010	Seal kit (contains pos. 2, 5, 6, 7)
	14844015	Air cylinder kit (contains pos. 3, 4, 5, 6, 10)

## Hydraulic symbol HT valve



## Repair instructions: VAL-0018